

## Flat Sided Lure Bodies

### Unpainted Wood Lure Bodies

#### 2.8" Flat Sided Bull Nose CrankBait Lure



Item Code : **CBBN280**

Length : **2.8" Nose to Tail ≈**

Height : **1.0" Top to Bottom ≈**

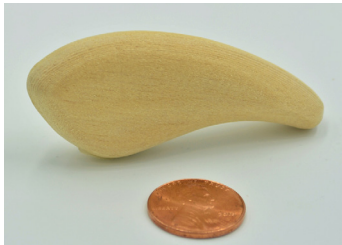
Thickness : **3/8" ≈**

Wood : **Milk Wood**

**\$2.49 +**

These bodies have a flattened sides, a bull nose front and a large curved belly. Perfect for making custom painting lures. Add screw eyes, bills/lips, custom paint for a great looking lure.

#### 2.5" Flat Sided Lower Belly CrankBait Lure



Item Code : **CBJLLB025**

Length : **2.5" Nose to Tail ≈**

Height : **1.05" Top to Bottom ≈**

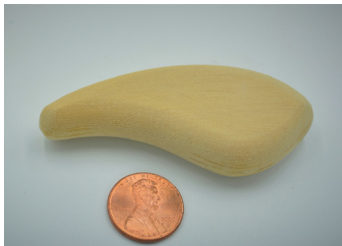
Weight : **1/5 Oz (5 gms) ≈**

Thickness : **0.5 ≈**

**\$3.49 +**

These bodies have a flattened sides and a beveled outer edge on both sides. Highly buoyant, High strength wood timber Lower Belly for added stability of bait

#### 2.8" Flat Sided Lower Belly CrankBait Lure



Item Code : **CBJLLB028**

Length : **2.8" Nose to Tail ≈**

Height : **1.2" Top to Bottom ≈**

Thickness : **0.5" ≈**

Wood : **Jelutong Wood**

**\$3.59 +**

These bodies have a flattened sides and a beveled outer edge on both sides. The Belly is taller in this bait to allow more weight addition and better stability of the lure.

#### 3.5" Flat Sided CrankBait Lure Wood Body



Item Code : **CBJLLB035**

Length : **3.5" Nose to Tail ≈**

Height : **1.45" Top to Bottom ≈**

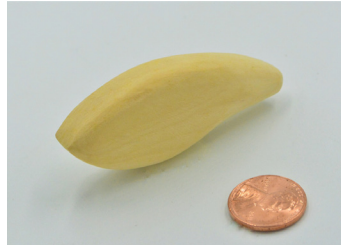
Thickness : **0.5" ≈**

Wood : **Jelutong Wood**

**\$5.50 +**

These bodies have a flattened sides and a beveled outer edge on both sides. The Belly is taller in this bait to allow more weight addition and better stability of the lure.

#### 2.5" Flat Sided Bull Nose CrankBait Lure



Item Code : **CBBN250**

Length : **2.5" Nose to Tail ≈**

Height : **1.1" Top to Bottom ≈**

Weight : **0.30 Oz (9 gms) ≈**

Thickness : **0.5" ≈**

**\$2.50 +**

Made from fine-grained, light weight, cream-colored ivory wood. Finely sanded. These bodies have a flattened sides, a bull nose front. Add screw eyes, bills/lips, custom paint for a great looking lure.

#### 2.8" Flat Sided Bull Nose CrankBait Lure



Item Code : **CBJL028**

Length : **2.8" Nose to Tail**

Height : **1.0" Top to Bottom**

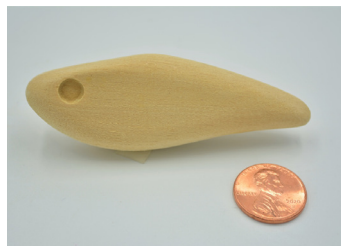
Weight : **<1/4 oz**

Thickness : **0.5 ≈**

**\$3.59 +**

These bodies have a flattened sides and a beveled outer edge on both sides. Highly buoyant, High strength wood timber Lower Belly for added stability of bait

#### 3.0" Flat Sided LipLess CrankBait Lure



Item Code : **CBJLLL030**

Length : **3.0" Nose to Tail ≈**

Height : **1.0" Top to Bottom ≈**

Thickness : **0.5" ≈**

Wood : **Jelutong Wood**

**\$3.89 +**

These bodies have a flattened sides and a beveled outer edge on both sides. A flattened front top acts as diving lip.

#### 5.0" Flat Sided JerkBait / CrankBait Lure



Item Code : **JB005**

Length : **5.0" Nose to Tail ≈**

Height : **1.6" Top to Bottom ≈**

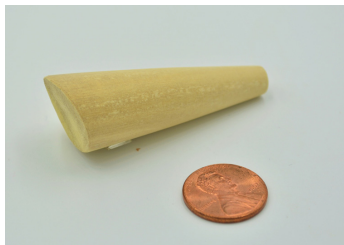
Thickness : **0.75" ≈**

Wood : **Jelutong Wood**

**\$17.99 +**

Fully Assembled and Ready to Paint BassWood with internal through wire / weighting Lips cut and installed Sealer coated applied

#### 2.25" Unpainted Popper Wooden Lure Body



Item Code :	P2251
Length :	2.25" Nose to Tail ≈
Widest-Mouth Dia:	0.75" ≈
Height :	0.50" Top to Bottom ≈
Weight :	<1/4 oz ≈

**\$1.89 +**

Made from a fine grain, light weight, sandal colored ivory wood. Beautifully shaped, with a carved in concave mouth. Great for making small custom wooden popper lures.

#### 5.25" Unpainted Popper Wooden Lure Body



Item Code :	P005
Length :	5.25" Nose to Tail ≈
Popper Mouth :	1.0" wide ≈
Weight :	0.85 Oz ≈

**\$3.25 +**

Through hole: drilled between nose to tail for through wiring. Turned carefully and handcrafted concave mouth, Popper wooden fishing lure blank. Sanded to a very smooth finish.

#### 2.75" Shad Style Wooden Lure Body



Item Code :	RBMW275
Length :	2.75" Nose to Tail ≈
Height :	0.9" Top to Bottom ≈
Thickness :	0.35" ≈
Weight :	0.150z

**\$2.99 +**

Made from fine grained, light weight, cream colored and tough wood. These shad bodies have a rounded belly on all sides, and a narrow tail. Mimics a bait fish.

#### 2.3" Wide Belly Shad Diver Wooden Lure



Item Code :	CBSHD2P3
Length :	2.3" Nose to Tail ≈
Height :	0.75" Top to Bottom ≈
Thickness :	7/16" ≈
Weight :	7gms ≈

**\$3.89 +**

These shad bodies have a wide lower belly and slightly flattened underside. Perfect for baits with wide wobble and works well as a wake bait or a shallow diver. Ultra light, Buoyant and Strong Timber

#### 3.1" Unpainted Popper Wooden Lure Body



Item Code :	P001
Length :	3.1" Nose to Tail ≈
Height :	0.85" Top to Bottom ≈
Weight :	1/2 oz or (0.50 oz) ≈

**\$2.69 +**

Through hole: drilled between nose to tail for through wiring. Turned carefully and handcrafted concave mouth, Popper wooden fishing lure blank. Sanded to a very smooth finish.

#### 4.2" Unpainted Cigar Wooden Lure Body



Item Code :	CG0011
Length :	4.2" Nose to Tail
Weight :	0.9 Oz
Wood :	Red Cedar
Optional :	Through hole, nose to tail, for through wiring

**\$3.59 +**

These lure bodies are custom turned to a Cigar shape and sanded to a smooth finish. At 4.2" length it is perfectly sized for a wide range offishing from bass to Musky and Strippers.

#### 2.7" Slim Shad Wood Crankbait



Item Code :	RBJL2P7
Length :	2.7" Nose to Tail ≈
Height :	1.0" Top to Bottom ≈
Thickness :	0.55" ≈
Weight :	4 gms ≈

**\$3.59 +**

These Slim Shad Bodies are made from ultra light weight, highly buoyant but strong Jelutong timber. Swims like Balsa, but holds screw eyes very well, resists breakage and lasts long.

#### 2.3" Round Belly Shad Diver Wooden Lure



Item Code :	CBSHDR2P3
Length :	2.3" Nose to Tail ≈
Height :	1.0" Top to Bottom ≈
Thickness :	0.9" ≈
Weight :	6.5gms ≈

**\$3.89 +**

These wide shad baits have a large belly and a generally rounded body. Perfect for baits with wide wobble and works well as a wake bait or a shallow diver. Ultra light, Buoyant and Strong Timber

#### 3.0" Mini Torpedo Wood Lure



Item Code :	BM003
Length :	3.0" Nose to Tail ≈
Height :	0.50" Top to Bottom ≈
Material :	Wood
Shape :	Bull nose Torpedo

**\$2.79 +**

Beautifully shaped like a mini Torpedo with a bull nose front. Great for top water action. Through hole drilled from nose to tail

#### 4.0" Torpedo Bait Fish Wood Lure



Item Code :	EX002
Length :	4.0" Nose to Tail ≈
Height :	0.9" Top to Bottom ≈
Weight :	0.45 oz or (1/2 Oz) ≈
:	

**\$3.25 +**

Beautifully shaped like a torpedo Bait fish with pointed nose and tail. Smooth Fine Grain, Hand surfaced Wood.

#### 6.0" Torpedo Turned Wood Lure Blank



Item Code :	PB006
Length :	6.0" Nose to Tail ≈
Height :	1.0" Top to Bottom ≈
Weight :	1.25 oz ≈
:	

**\$3.99 +**

Made from a fine grain, light weight, sandal colored tropical hardwood. Great for making custom wooden lures - Bass / Peacock Bass / Musky / Striper / Bluefish. Beautifully shaped, and manually fine sanded by hand

#### 6.0" Slim (UNIFORM THICKNESS) Musky/Surf Lure



Item Code :	WKSLM006
Length :	6.0" Nose to Tail ≈
Holes :	Through holes at nose and tail.
Thickness :	1.05" ≈
Weight :	1.50 oz ≈

**\$4.69 +**

Beautifully turned to a uniform thickness across the length of the body, tapering slightly towards the end. Through drilled from front to back. Great for big bass, Muskies, Pikes, Stripers and bluefish.

#### 2.5" Mini Cigar TopWater Wood Lure



Item Code :	BM025
Length :	2.5" Nose to Tail ≈
Weight :	0.45oz (1/20z) ≈
Wood :	Buoyant Red Cedar
Shape :	Bull nose Torpedo

**\$2.89 +**

Beautifully shaped like a mini Cigar with a bull nose front. Great for top water action. Precision turned and hand surfaced to a smooth finish. No through holes.

#### 5.0" Torpedo Turned Wood Lure Blank

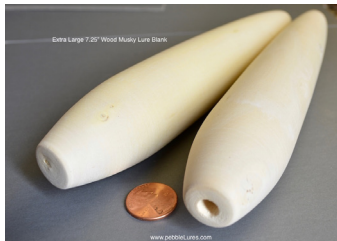


Item Code :	PB0051
Length :	5.0" Nose to Tail ≈
Height :	0.9" Top to Bottom ≈
Weight :	1.00 oz ≈
Optional :	Through hole, nose to tail, for through wiring

**\$3.89 +**

Holds magnum 0.092" O.D screw eyes very well on this tropical fine grain wood. Great as a prop bait and exceptionally well suited for fishing peacock bass.

#### 7.25" (LARGE) Cigar Musky Wood Lure



Item Code :	MSKY007
Length :	7.5" Nose to Tail ≈
Height :	1.3" Top to Bottom ≈
Weight :	2.7 oz ≈
:	

**\$4.50 +**

Great for making custom wooden lures. Drill holes, add ballast lead weight screw eyes, lips/bills and custom paint to create your personal great looking lure.

#### 7.50" Slim Profile Musky Lure Blank



Item Code :	MSKYR0071
Length :	7.50" Nose to Tail ≈
Thickness :	1.25" ≈
Weight :	1.85 oz ≈
Wood :	Red Cedar

**\$4.99 +**

Has a slimmer profile, with the top to bottom belly thickness of 1.25" inch approx. Excellent lure as a top water tail waited bait or as a stick bait or pencil popper. Nose to Tail through hole drilled



#### Large 6.0" wood Musky & Surf Fishing Lure



Item Code : **MSKY0063**

Length : **6.0" Nose to Tail ≈**

Height : **1.2" Top to Bottom ≈**

Weight : **1.7oz ≈**

Hole/Sockets: **Nose to Tail Through hole. Hook Hanger Belly hole. 1/2" Eye sockets.**

**\$5.15 +**

Fine grain, light weight timber. Excellent as a Musky / Surf Fishing lure. Pre-drilled through hole, belly hole and eye sockets for quick build. Excellent as a top water tail weighted lure.

#### Rolling Pin Lure | Large 6.0" Musky Fishing



Item Code : **WK006**

Length : **6.0" Nose to Tail ≈**

Diameter : **1.05" ≈ Uniform thickness with large**

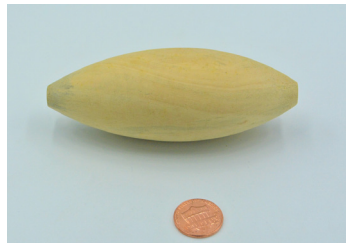
Weight : **3.0 oz ≈**

Wood : **Red Cedar**

**\$5.99 +**

Beautifully turned to a uniform thickness across the length of the body, tapering towards both ends. Through drilled from front to back. Great for big bass, Muskies, Pikes, Striped Bass and Bluefish.

#### 5.0" Large Torpedo Wood Lure Blank



Item Code : **FT050**

Length : **5.0" Nose to Tail ≈**

Thickness : **1.875" at belly ≈**

Weight : **2.75 oz ≈**

Nose to Tail through hole drilled

**\$6.49 +**

Made from a fine grain, light weight, sandal colored tropical hardwood. Beautifully shaped, and smooth sanded. Great for making custom wooden lures - Bass / Peacock Bass / Musky / Striper / Bluefish

#### 5.5" Flat Sided Wood Glide Bait / Jerk Bait



Item Code : **GBMSKY0055**

Length : **5.5" Nose to Tail ≈**

Height : **1.2" Top of lure to bottom of lure belly**

Thickness : **0.75" ≈**

Weight : **0.90 Oz (25gms) ≈**

**\$11.99 +**

All wood, flat sided bait great to use as Glide bait or Jerk bait. Excellent for Musky / Bass. Use as a stick bait for saltwater fishing. Light weight BassWood

#### Large 7.25" Wood Musky & Surf Fishing Lure



Item Code : **MSKYR0073**

Length : **7.25" Nose to Tail ≈**

Height : **1.3" Top to Bottom ≈**

Weight : **2.0 oz ≈**

Hole/Sockets: **Nose to Tail Through hole. Hook Hanger Belly hole. 1/2" Eye sockets.**

**\$5.75 +**

Highly Buoyant & light weight Red Cedar timber. Excellent as a Musky/ Surf Fishing lure. Pre-drilled through hole, belly hole and eye sockets for quick build. Excellent as a top water tail weighted lure

#### Extra Long 8.0" Wood Musky Fishing Lure



Item Code : **WKSLM008**

Length : **8.0" Nose to Tail ≈**

Thickness : **1.24" Max ≈**

Weight : **2.3 oz ≈**

Wood : **Red Cedar**

**\$5.99 +**

Through drilled from nose to tail for through wiring. Perfect lure body for making custom musky, pike and surf lures. Can be tail weighted for topwater, walk-the-dog action.

#### Rolling Pin Lure | X Large 8.0" Musky Fishing



Item Code : **WK008**

Length : **8.0" Nose to Tail ≈**

Diameter : **1.50" ≈ Uniform thickness with large**

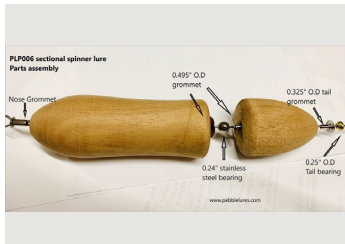
Weight : **3.75 ~4.25+ oz ≈**

Wood : **Red Cedar**

**\$7.25 +**

Beautifully turned to a uniform thickness across the length of the body, tapering towards both ends. Through drilled from front to back. Great for big bass, Muskies, Pikes, Striped Bass and Bluefish.

#### 6.5" Musky / Bass Sectional Top water Lure Blank with tail spinner



Item Code : **PLP0065**

Length : **6.5" Nose to Tail ≈**

Front Body : **4.0" ≈**  
Rear Tail : **2.5" ≈**

Height : **1.4" ≈**

Weight : **2.3 oz ≈**

**\$5.99 +**

Fairly simple to build. Does not require heavy duty tools. Just a hand drill (for drilling belly hook hanger) and hacksaw (for cutting blade slot on rear body) Use Safety precaution when using tools.